

Warm Welcome To Chaity Group



Garments:

Chaity Composite Ltd.
Chaity Knit Composite Ltd.
Ashique Dress Design Ltd.
Ashique Jeans Apparels Ltd.
Nice Apparels Inds. Limited.

Textile:

Chaity Composite Ltd.
Chaity Knit Composite Ltd.

Printing:

Ashique Dress Desgin Printing Ltd
The Plasticman Screen Print Ltd.
The Plasticman AOP Ltd.

Accessories :

The Plasticman Ltd.
Kitway Pack (Pvt.) Ltd.

Spinning:

Abul Kalam Spinning Mills Ltd.

Website: www.chaity.com



ABOUT US

- Established in the year 1991.
- Has built a reputation throughout the global apparel industries.
- Able to create a dynamic and vibrant working environment with people having national and international exposure.
- Our strategic goal to become one of the top ranking garment producers in the region.

CHAITY GROUP

Vision

To be the most preferred and dedicated business partner of our customers with newer benchmarks which will redefine the terms "Quality, Delivery and Excellence".

Mission

To provide total garments solution to enhance the business of our customers, concurrently developing better technologies that benefit both the customers and environment.

COMPANY OVERVIEW

- Total Manpower : 15,000 prs
- Annual Export last Year : \$140 million
- Annual Export This Year(Expected) : \$175 million

Garments Division (Production Capacity):

- Light Knit : 5 million pieces/month
- Undergarments : 2.5 million/month
- Total Production Lines : 156 lines
- No of Sewing Machines : 4200 nos

Textile Division (Production Capacity Per Day):

- Knitting : 65 MT with 235 machines
- Dyeing : 60 MT
- Finishing : 60 MT

Accessories Division :

- The Plasticman Ltd. : Produce all accessories required for total garments solution.
- Kitway Pack (Pvt) Ltd. : Fully automated corrugated carton factory.

ABUL KALAM SPINNING MILLS LTD.

- Number of Spindles : 110,000
- Daily Production Capacity of Spun Yarn : 73,000 kg Spun Yarn (Combed, Carded, Cotton Melange, PC and CVC) & 15,000 kg Open End

ABUL KALAM SPINNING MILLS LTD.



Total Area Size

650,000 sq.ft

Total Number of Spindles

110,000

Daily Production Capacity of Spun Yarn

73,000 kg

Daily Production Capacity of Open End

15,000 kg

Products

Combed Cotton, Carded Cotton, Cotton Mélange, PC and CVC, Open End Yarn

ABUL KALAM SPINNING MILLS LTD.



ABUL KALAM SPINNING MILLS LTD.



TEXTILE DIVISION



Knitting

State of the art knitting machines from Europe, Japan, Italy, and Taiwan producing **65 Tons fabric per day with 235 circular machines.**



Dyeing

Dyeing Machines from Germany produce approximately **60 Tons fabric per day.**

TEXTILE DIVISION



Dyeing-Finishing

Finished fabric of **60 Tons** is produced per day with world renowned automated machines from Germany, Italy, Switzerland and Taiwan.



Laboratory

A modern laboratory equipped with the latest technology.

GARMENTS DIVISION



Cutting

Automated cutting machines from France and Germany.



Sewing (Knitted)

Sewing floors for Knitted and Under garments have 156 sewing lines with 4200 sewing machines.

GARMENTS DIVISION



Sewing (Undergarments)

Automated cutting machines from France and Germany.



Finishing & Packing

Garments are carefully handled and packed to ensure the best quality before shipment.

ALL OVER PRINTING UNIT



Renowned Flatbed and Rotary printing machines from Japan and Austria.

- AOP Rotary : 7000 kg (Up to 12 Print colors)
- AOP Flatbed : 6000 kg (Up to 10 Print colors)

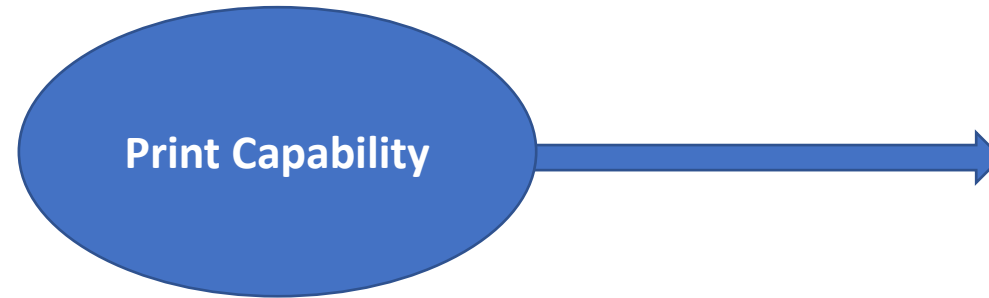
PRINTING UNITS



- Flatbed and Rotary printing machines from Japan and Austria.
- Screen Printing Machine: Octopus, Oval shape and digital printing m/c from Japan, Austria & Turkey.
- All print units comply compliance

Production Capacity Per Day

- AOP Rotary : 7000 kg (Up to 12 Print colors)
- AOP Flatbed : 6000 kg (Up to 10 Print colors)
- Digital Print : 4500 pcs
- Screen Print : 150,000 pcs



Screen Print

UV Print
Photo Print
Hi-Density Print
Digital Print
Flock print
Puff Print
Stone/Glitter Print
Foil Print
Heat Transfer Print
Sublimation Print
Discharge Print
Silicon Gel Print

AOP

Pigment Print
Discharge Print
Glitter Print
Burn Out

OFFSET PRINTING UNIT



Unit has the world's best machines from HEIDELBERG Germany.

Production Capacity Per Day: 160,000 Pcs

LABEL PRINTING UNIT



Quality printed labels are produced by Taiwanese machines.

Production Capacity Per Day: 300,000 Pcs

ELASTIC UNIT



No of Crochet Machine - 32 : Capacity 130,000 Yards/Day
No of Jacquard Machine - 10 : Capacity 10,000 Yards/Day
No of Elastic Machine - 85 : Capacity 200,000 Yards/Day

We manufacture Woven, Jacquard and Crochet Elastic with 127 world renowned machines from Taiwan including dyeing and finishing facilities.

POLY BAG UNIT



Machines from Taiwan and China produce Poly Bags and Zip lock Poly Bags.

Production Capacity Per Day : 200,000 Pcs

HANGER UNIT



Unit is organized with 12 plastic molding machines from Taiwan.
Production Capacity Per Day : 80,000 Pcs

SEWING THREAD UNIT



No of machine - 24

Production per day - 15,000 Cone

TWILL TAPE & GUM TAPE



NO of machine - 5 (42 heads)

Production per day - 23,000 yds

Origin of machine - China/Thailand

EMBROIDERY UNIT



No of machine: 3 (22 heads)

No of machine: 4 (20 heads)

No of machine: 1 (6 heads)

Production per day: 1.5 M stitches per day

Origin of machine: Japan (Tajima)

Kitway Pack (Pvt.) Ltd.



Our **Carton Factory** adds to our ever-growing list of impressive facilities and boasts a production capacity of **100,000 pieces per day**.

LOGISTIC DIVISION



Generator

The plant is equipped with its own power generation.

Transportation

Own transport system with a fleet of covered vans and tracks carries goods from Dhaka-Chittagong-Dhaka.

OUR MAJOR CUSTOMERS



LPP



GARAN
Incorporated



RCHLO
RIACHUELO



zudio



OUR PRODUCTS



OUR PRODUCTS



OUR PRODUCTS

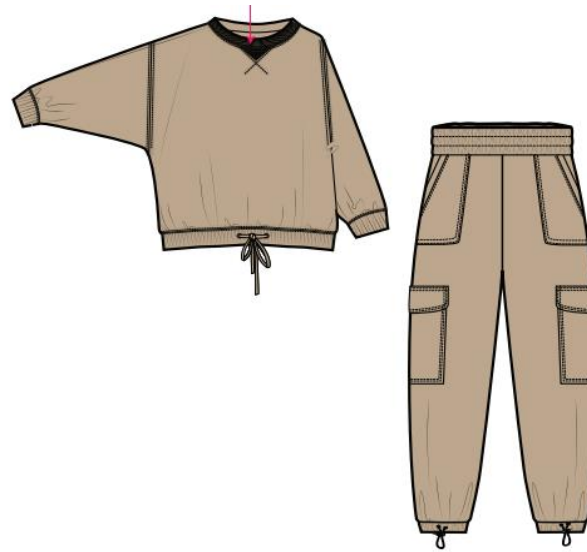


OUR PRODUCTS

drop shoulder crew



sporty skirt



asymetric neck tee



TOP 1



BOTTOM 1



velvet woven sleeve crew



OUR PRODUCTS



Cradle to Cradle



Cradle to Cradle



Cradle to Cradle



Cradle to Cradle



Baby Baskets



OUR PRODUCTS



OUR PRODUCTS



OUR PRODUCTS



OUR PRODUCTS



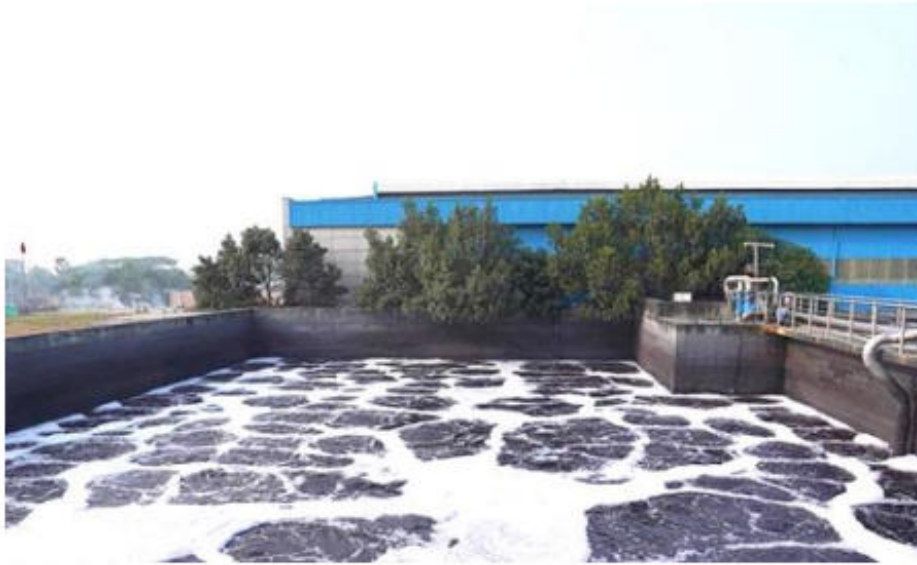
OUR PRODUCTS



OUR PRODUCTS



ENVIRONMENT FRIENDLY FACTORY



Biological Treatment ETP: A most modern water treatment plant with Italian Technology having capacity of 5000 cu-m/day.



Solar Panels will be installed to power the lighting of the entire factory premises and its outside facilities.

FUTURE EXPANSION PLAN



ASHIQUE TOWER 1 & 2

Environmental Certificates



WAGES AND FACILITIES

Wages

- Government declared Wages
- Attendance Bonus
- Two Festival Bonus
- Maternity benefits, etc

Facilities

- Medical Center
- Dining Hall
- Canteen

Good Practices

- Free Transport to all Workers
- Free medical Treatment
- Performance Bonus, etc



COMPANY SOCIAL RESPONSIBILITIES (CSR)



COMPANY SOCIAL RESPONSIBILITIES (CSR)



Facilities inside

- Medical Center
- Dining Hall for all
- Canteen
- **Free Transport to all workers**
- Day Care Facilities



Social Activities

- Donation to Rohingya community
- Clean the street campaign
- Free Health Check-up Campaign

COMPANY SOCIAL RESPONSIBILITIES (CSR)



During COVID19; Chaity Group and Abul Kalam Foundation Social Activity, distributed food and cloths

COMPANY SOCIAL RESPONSIBILITIES

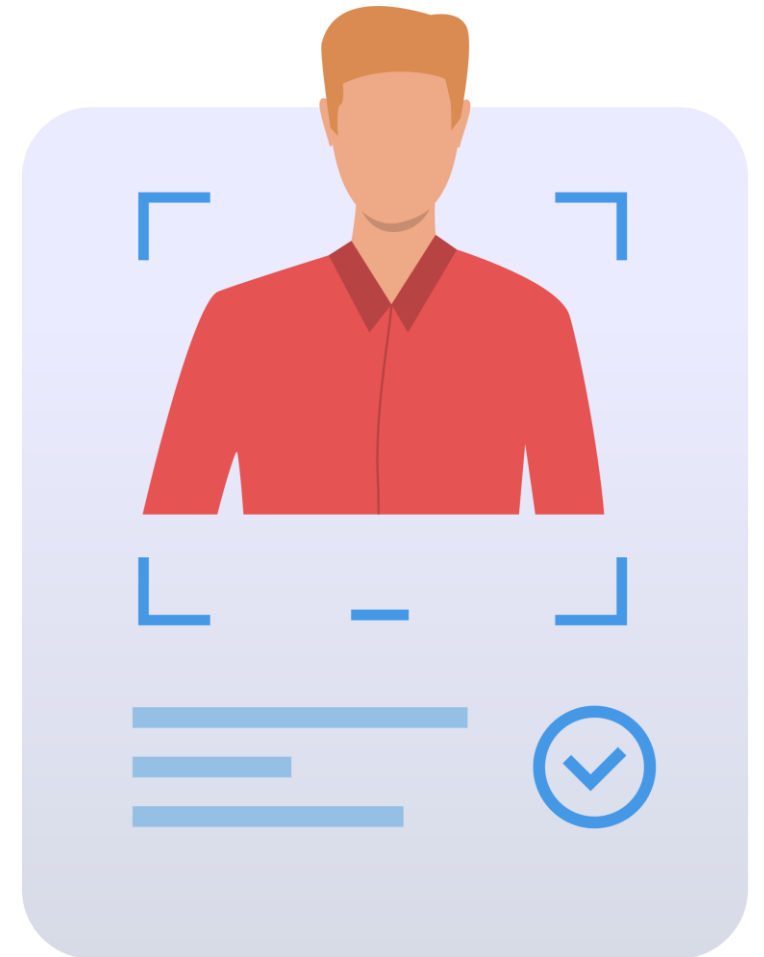
(CSR)

- Taking part in rebuilding activities during natural calamities ie; Rana Plaza massacre, devastating cyclone and flood.
- Donation to local administration and organizations during any big religious festivals
- Parents and families of workers are given free treatment with medicine twice in a year.
- Taking part in Area Cleaning Programe to commemorate with the world Environmental Day.



RECRUITMENT POLICY

- Company generally recruits locals on priority basis and
- Train them in company Training Center.
- During the training period company provides govt declared minimum wages.
- After the completion of training they are sent to sewing floor as operator





Md. Abul Kalam

Managing Director & CEO

BOARD OF DIRECTORS



Md. Abul Kalam
Managing Director & CEO
E-mail: kalam@chaity.com



Mrs. Rahmat Ara Begum
Chairman



Fahmida Shabnam Chaity
Director
E-mail: fs_chaity@chaity.com



Yasir Mohammed Faysal Ashique
Deputy Managing Director (DMD)
E-mail: yasir@chaity.com

THANK YOU